



Equipment List

3 Axis Vertical Milling Machines

- DMG Mori Seiki -Dura Vertical 5100 (QTY 3)
 - 12,000 RPM | Travel - 41.30"x 20.9" x 20.10"
 - CAT 40 Spindle
 - 30 Tool Magazine
 - DMG FOiMD Control

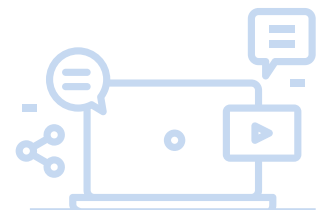
- Okuma - GENOS M560-V (QTY 2)
 - 14,000 RPM | Travel - 41.34"x 22.05" x 18.11"
 - CAT 40 Big+ Spindle
 - 32 Tool Magazine
 - OSP-P300M Control

- Fanuc Robodrill Mate (QTY 2)
 - 10,000 RPM | Travel - 16.14"x 12.20" x 12.99"
 - BT30 Spindle
 - 14 Tool Magazine
 - Fanuc Oi-MC Control

- Fanuc Robodrill Alpha D14MiA5 (QTY 2)
 - 10,000 RPM | Travel - 19.6"x 15.75" x 12.99"
 - BT30 Spindle
 - 14 Tool Magazine
 - Fanuc 31i-B5

- Fanuc Robodrill Alpha T14iFe
 - 10,000 RPM | Travel - 16.14"x 12.20" x 12.99"
 - BT30 Spindle
 - 14 Tool Magazine
 - Fanuc 31i-A

- Fanuc Robodrill Alpha D14SiA5
 - 10,000 RPM | Travel - 11.8"x 14.8" x 12.99"
 - BT30 Spindle
 - 14 Tool Magazine
 - Fanuc 31i-A



4 Axis Horizontal Milling Machines

- Okuma MB4000-H
 - 15,000 RPM | Travel – 22.05"x 22.05" x 24.61" (400mm Pallet)
 - CAT 40 Spindle
 - 48 Tool Capacity
 - OSP P300M Control

5 Axis Milling Machines

- Matsuura – MAM 72–3VS
 - 15,000 RPM | Travel – 26.77"x 15.74" x 24.60"
 - B Axis +65deg -> -110deg | C Axis 360deg
 - BT40 Spindle
 - 240 Tool Magazine
 - Fanuc 16i-M Control

- Matsuura – MAM 72–35V (QTY 3)
 - 20,000 RPM | Travel – 21.65"x 17.32" x 22.83"
 - B Axis +65deg -> -125deg | C Axis 360deg
 - BT40 Spindle
 - 320 Tool Magazine
 - Fanuc 31i G-TECH Control

- Matsuura – MX520 (QTY 2)
 - 12,000 RPM | Travel – 24.80"x 22.04" x 20.07"
 - One of Two Machines is Equipped with 20K RPM Spindle
 - A Axis +10deg -> -125deg | C Axis 360deg
 - BT40 Spindle
 - 60 Tool Magazine
 - Fanuc 31i G-TECH Control

- Okuma - GENOS M460V – 5AX
 - 14,000 RPM | Travel 30.00"x 18.11" x 18.11"
 - A Axis +20deg -> -110deg
 - CAT 40 Spindle
 - 48 Tool Magazine
 - OSP-P300MA-H Control

- Makino – a500Z
 - 14,000 RPM | Travel 28.70"x 29.50" x 19.70"
 - C Axis +0deg -> -180deg
 - HSKA63 Spindle
 - 313 Tool Magazine
 - Makino Professional 6 / Fanuc 31i Control

- Fanuc – Robodrill Alpha -D21LiA5
 - 24,000 RPM | Travel – 27.5"x 15.74" x 12.99"
 - A Axis +17deg -> -107deg
 - BT30 Spindle
 - 21 Tool Magazine
 - Fanuc 31i-A

Inspection & Quality Control

- COORD 3 CMM– ARES NT-XL 7.7.7 (QTY 2)
 - Travel – 27.55"x 25.59" x 25.59"
 - Renishaw PH20 Inspection Head
 - 6 Tool Magazine
 - UCC T3 Controller
- COORD 3 CMM– ARES NT-XL 10.7.7
 - Travel – 39.37"x 25.59" x 25.59"
 - Renishaw PH20 Inspection Head
 - 6 Tool Magazine
 - UCC T3 Controller
- Brown & Sharpe CMM– Micro Xcel PFX 4.5.4
 - Travel – 18" x 19" x 19"
 - Renishaw MH20i Inspection Head
- Nikon VMM – iNexIV VMA-LAF35
 - Travel –11" x 9" x 4"
 - Vision & Touch Probe Capabilities
- MicroVue Optical Comparator– S14A
 - 14" Diameter Viewing Screen, 5" x 8" Table
- Trimos V4-400 Height Gauge
 - Probe Equipped Digital Height Gauge
- Leica Stereo Microscope (QTY 3)
- Zoller Venturion 450 with Pilot 3.0
 - Automated Tool Pre-Setter

Laser Engraving & Assembly Equipment

- Universal Laser Systems – VLS 2.30
 - Travel – 16" x 12" x 4"
 - 30W CO2 Laser Marking System

- RMI – UM-1
 - Maximum Marking Area 1.417" x 1.417"
 - NgYAG Laser Marking System

Manual / Miscellaneous Equipment

- Chevalier Surface Grinder
- Bridgeport Manual Mill
- Hwacheon 17" x 40" Engine Lathe

Software

- SurfCAM Traditional
- CAMplete Truepath
- HSM Works by Autodesk
- SolidWorks
- CMM Manager
- Renishaw UCC Suite
- Inspection Xpert
- Shop Tech E2 – ERP System (Hosted On Premise)
- Microsoft Windows & Office
- Atlassian Confluence – Private Corporate Wiki